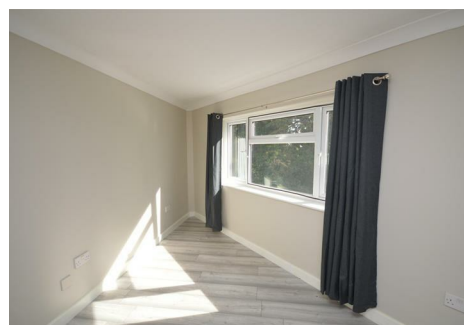


Flick & Son

Coast and Country



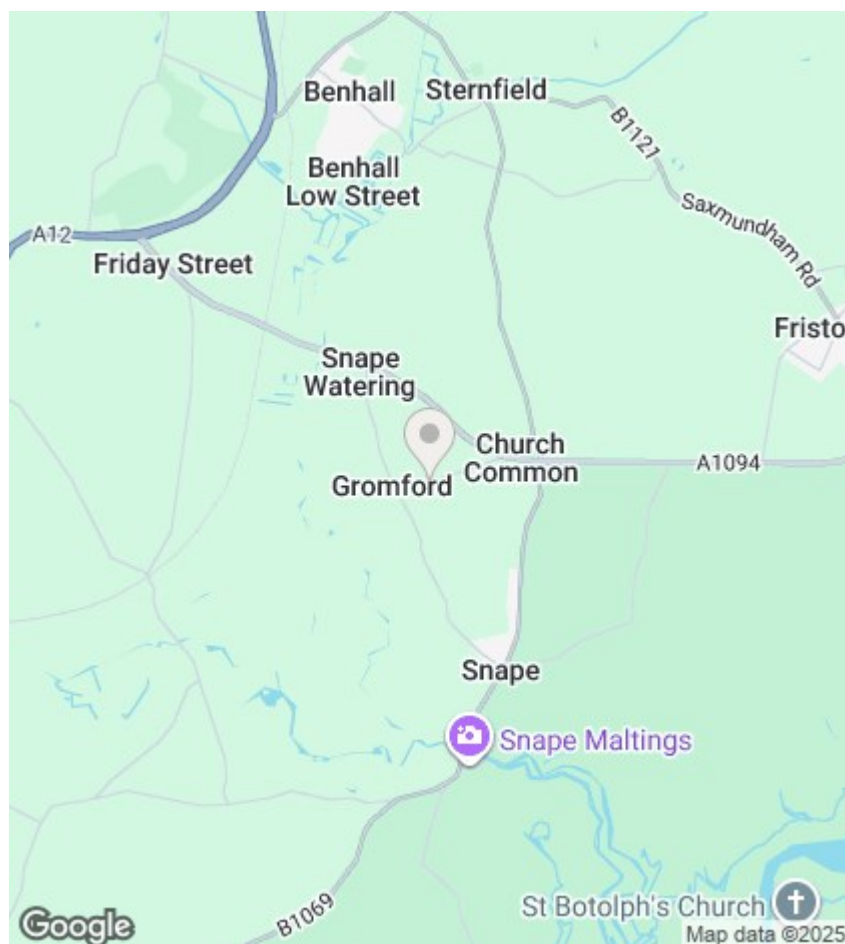
Snape ,

Rent: £550 PCM,


Council Tax: Band A

- First floor apartment
- Spacious living room
- Communal parking
- EPC: TBC
- Sorry no pets or smokers

- Modern kitchen
- Bathroom with shower over bath
- Village outskirts
- Holding deposit: £126.92



Energy Efficiency Rating

	Current	Potential
Very energy efficient - lower running costs		
(92 plus) A		
(81-91) B		
(69-80) C		
(55-68) D		
(39-54) E		
(21-38) F		
(1-20) G		
Not energy efficient - higher running costs		
England & Wales	EU Directive 2002/91/EC 	

DESCRIPTION

Flick & Son are pleased to offer for rent this modern one bedroom first floor apartment located on the outskirts of the popular village of Snape.

ACCOMMODATION

Through the front door you are welcomed into a modern fitted kitchen leading to a generous living room.

To the far side of the living room you find the bedroom. The bathroom with shower over bath is also accessed via the living room.

Outside there is a communal parking area providing ample parking for residents.

The property is heated via electric heating. It has an EPC rating TBC.

LOCATION

Snape has three bistro pubs and the internationally famous Snape Maltings Concert Hall, with surrounding shops and café. Snape is equidistant between the Mediaeval fishing village of Orford and the popular resort town of Aldeburgh, both within the Suffolk Coast and Heaths Area of Outstanding Natural Beauty and all connected by the Rivers Alde and Ore. The nearby market town of Saxmundham benefits from a branch line railway station that connects to London Liverpool St via Ipswich and two supermarkets and only a few miles away Friday Street Farm Shop, with café, butchers and fishmongers, sells local produce and groceries.

AVAILABILITY

The property is available from the 25th October 2025 for an initial twelve month term.

Council Tax: Band A

Deposit required: £634.61

Sorry no pets or smokers

VIEWINGS

Please contact Flick & Son, Ashford House, High Street, Saxmundham, IP17 1AB for an appointment to view.